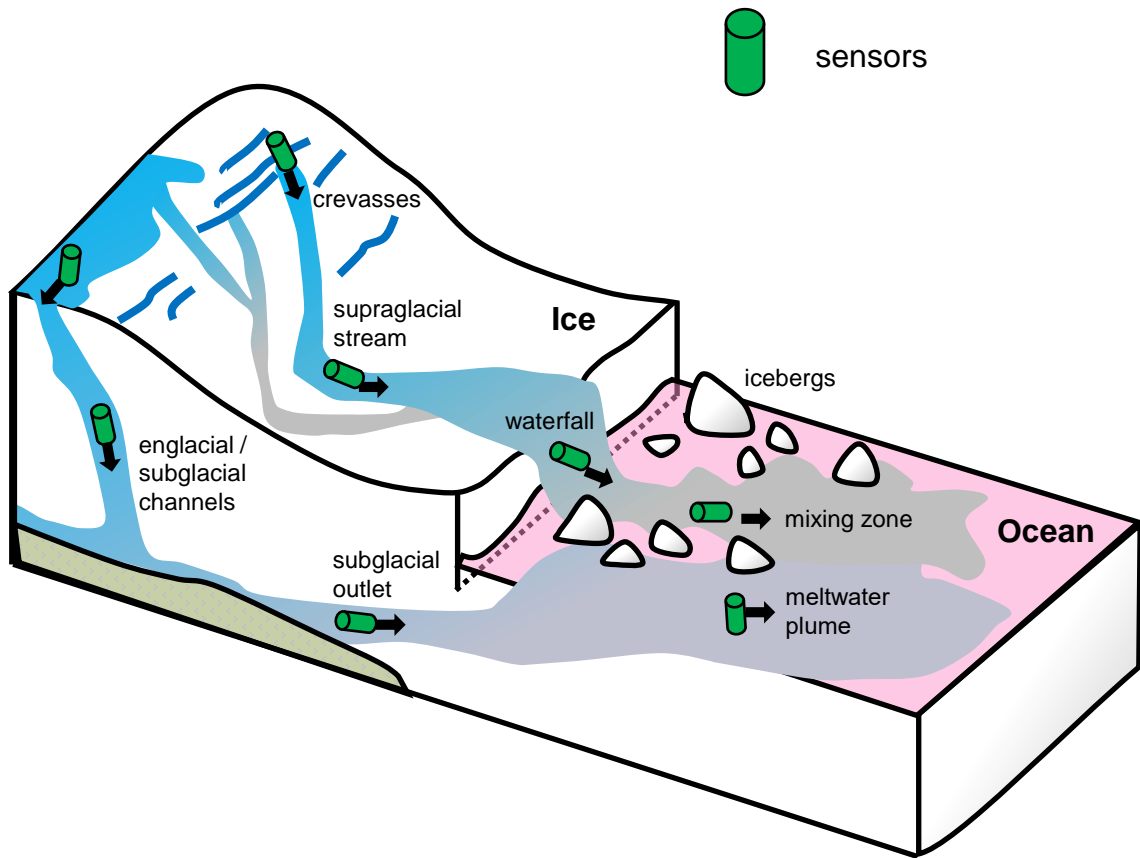




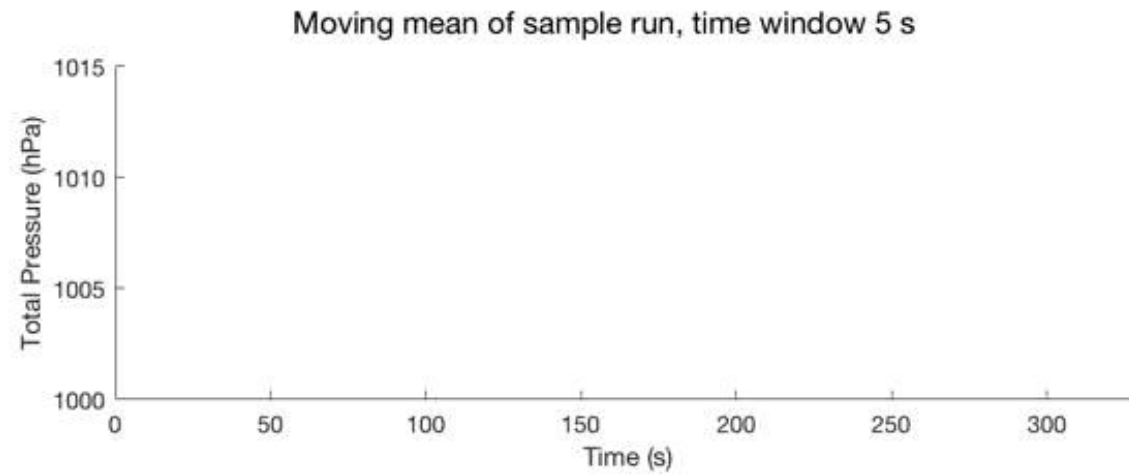
# HIGH TECH EXPLORATION OF GLACIAL FJORDS AND GLACIERS

**TAL  
TECH**

Maarja Kruusmaa

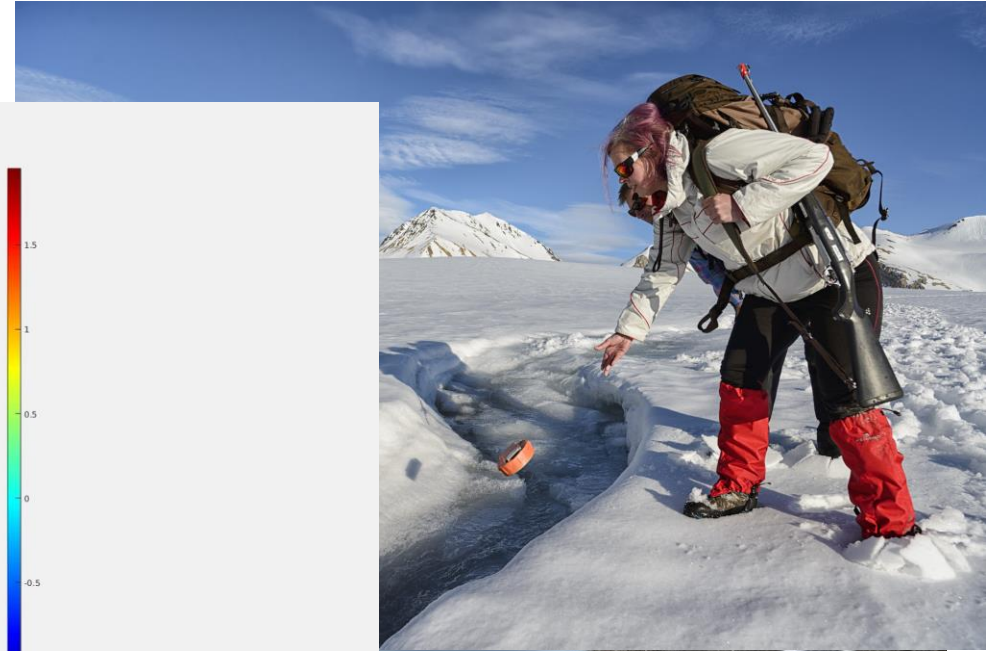
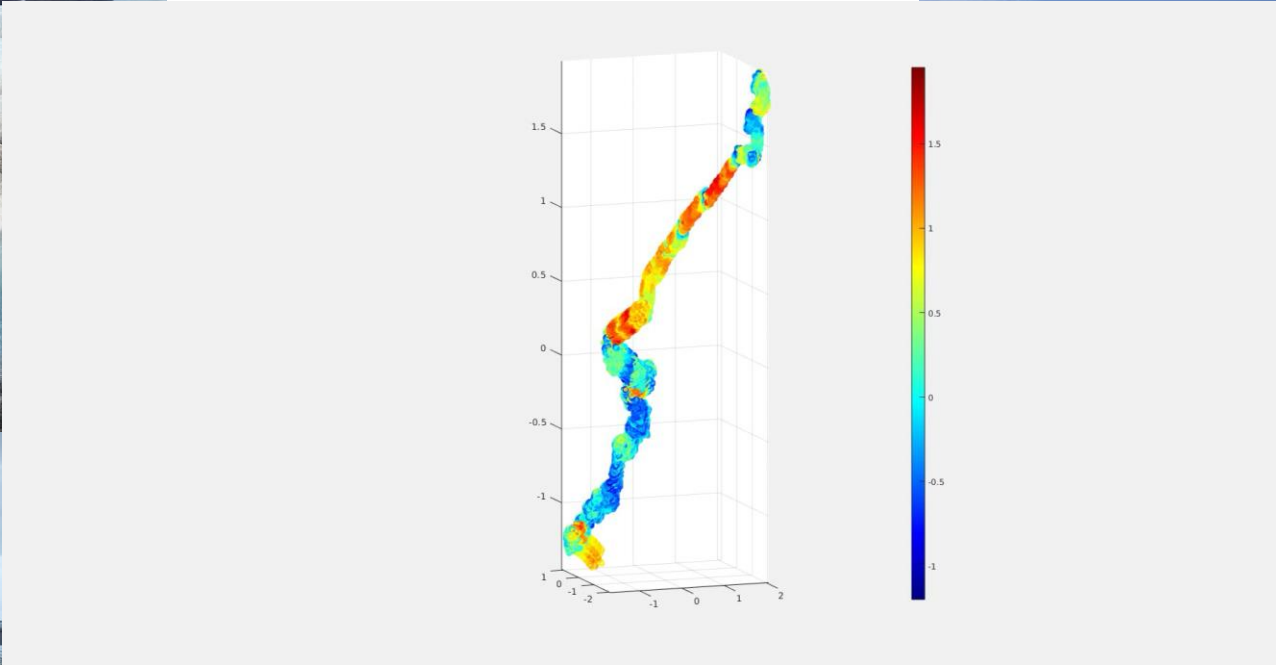
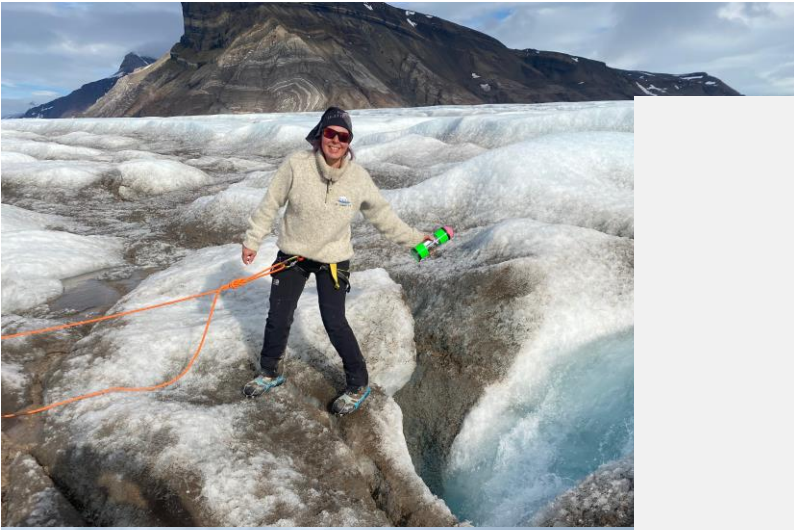






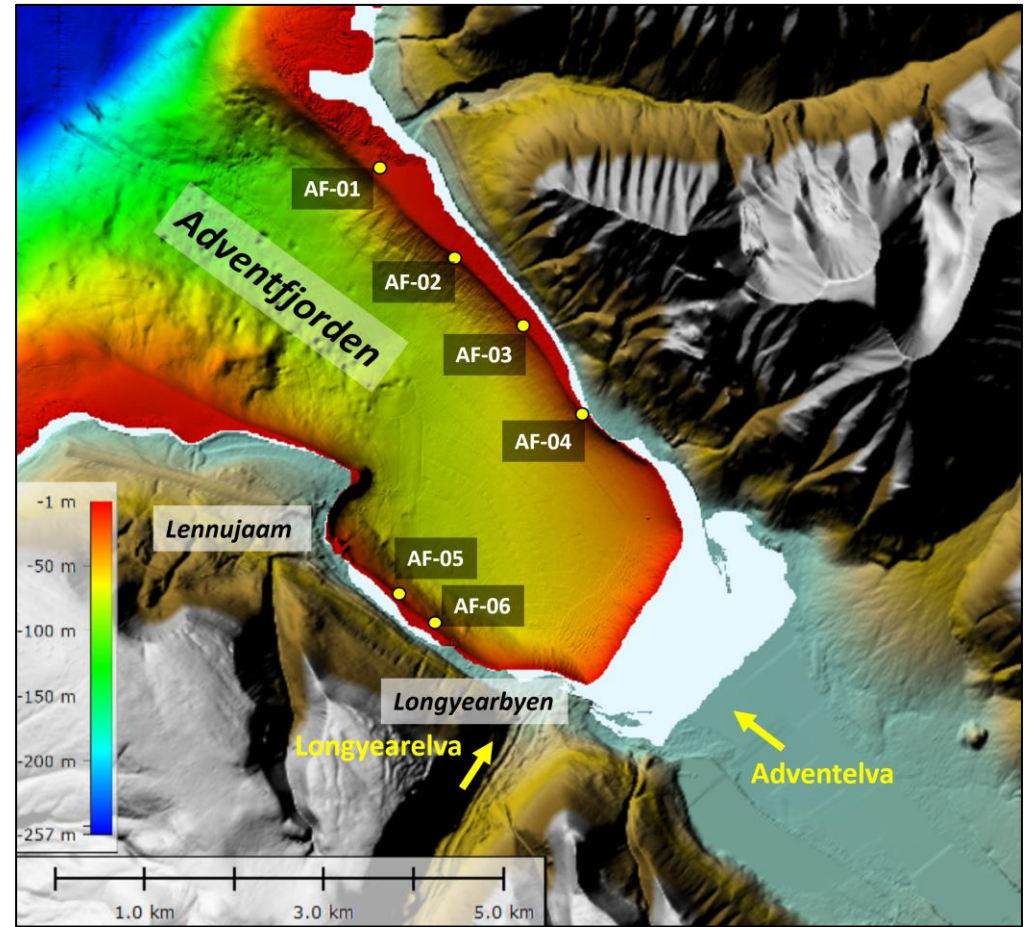


# MAPPING INGLACIAL MELTWATER PATHWAYS



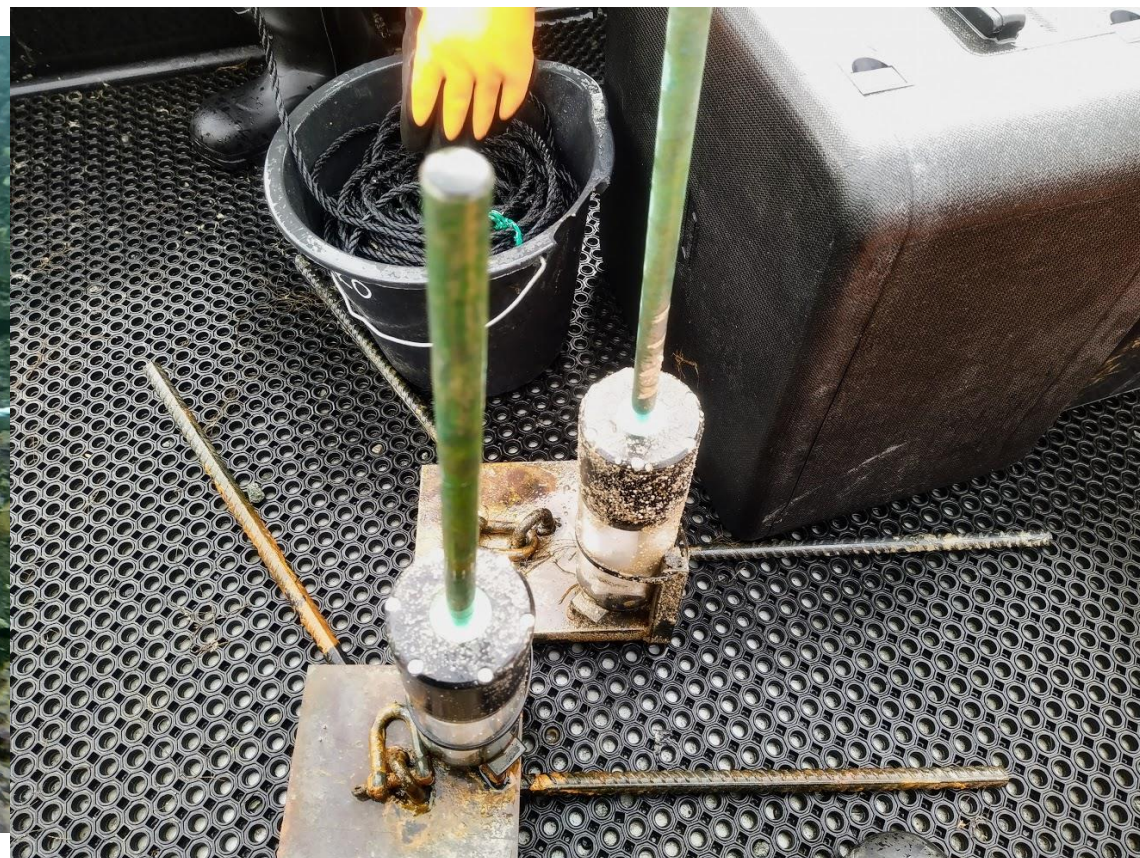
## **COASTADAPT: INVESTIGATION OF SEABED DYNAMICS AND WAVE ACTION IN ISFJORDEN TO BENEFIT THE CLIMATE ADAPTATION OF THE COASTAL COMMUNITY IN SVALBARD.**



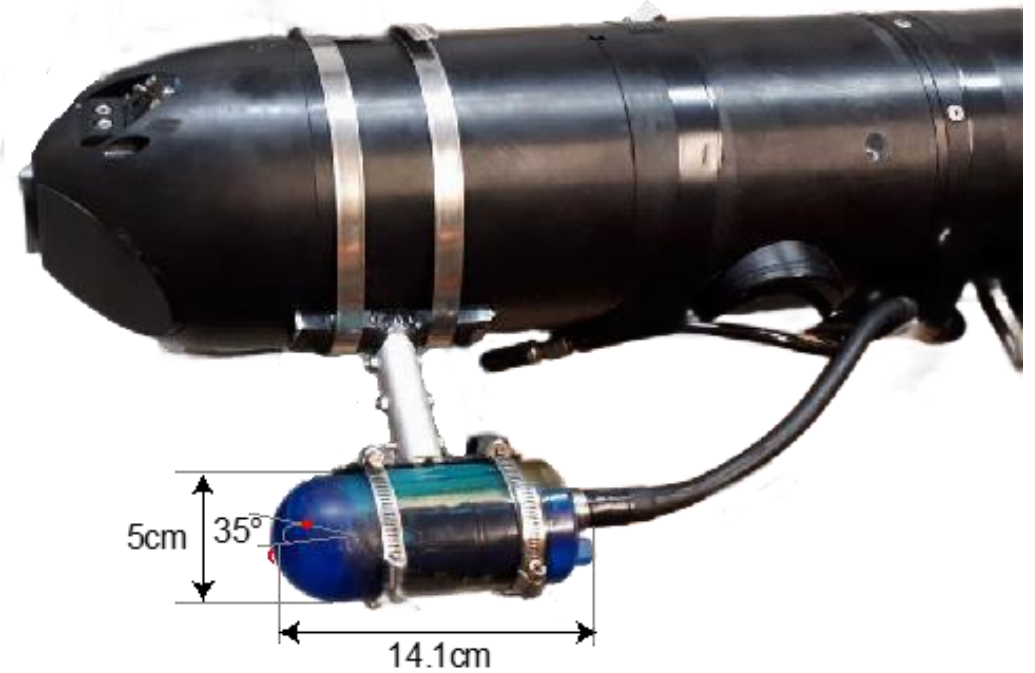
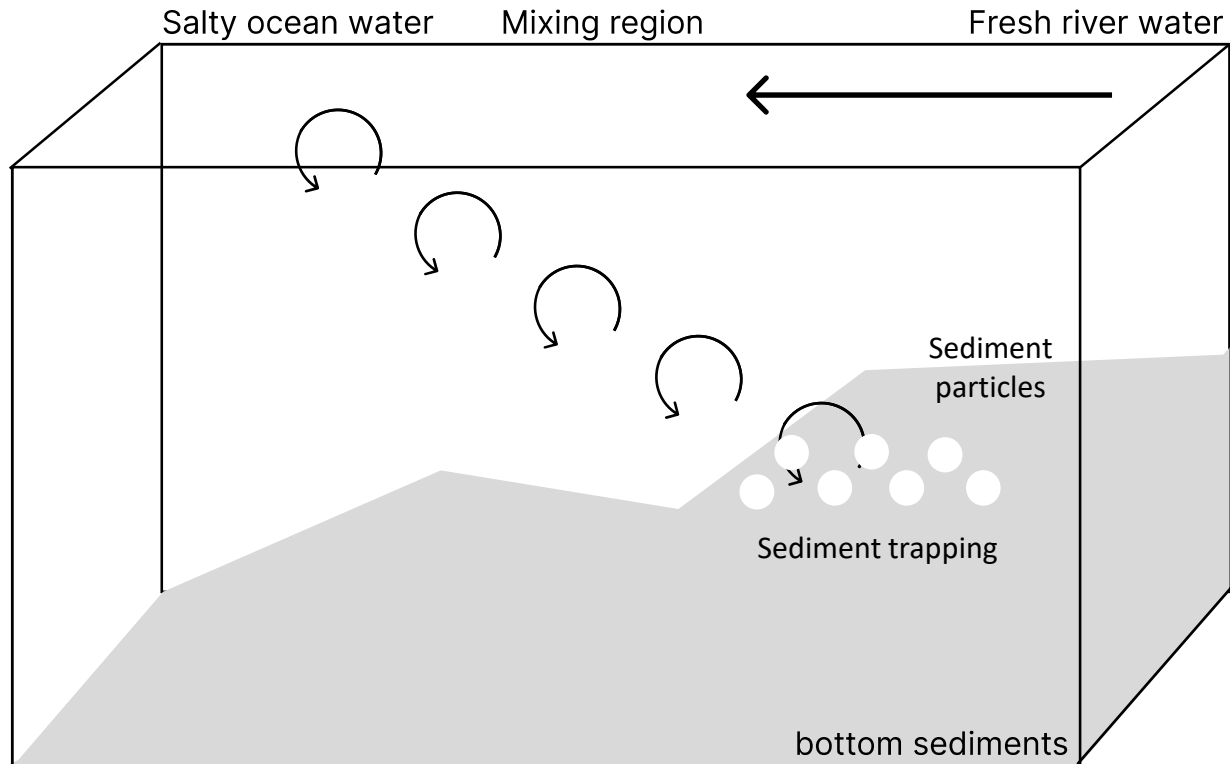




## 9 SENSORS DEPLOYED FOR 1 YEAR



# SENSING CURRENTS AND TURBULENCE (UNDER ICE-SHELF)



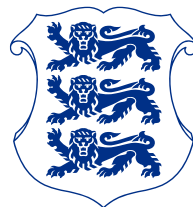
**TAL  
TECH**

TALLINNA TEHNIKAÜLIKOOL

 **NTNU AMOS**  
Centre for Autonomous Marine  
Operations and Systems

 Norwegian  
Center of  
Excellence

# TAL TECH



VÄLISMINISTEERIUM

  
**UNIS**  
The University Centre in Svalbard



 **The Research Council  
of Norway**

 **Eesti Teadusagentuur  
Estonian Research Council**